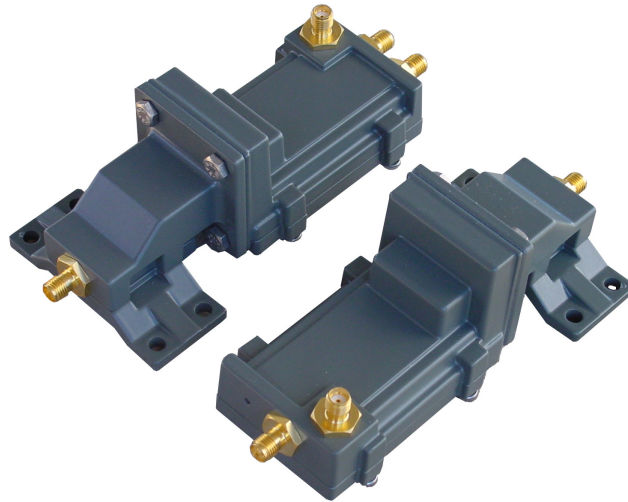


## ***SMW Ku-band ILA***



### ***Ku-band Amplifiers***

Both models cover the whole Ku-band 10.7-12.75 GHz, but can be supplied with integrated filters for specified band. The very high reliability allows two-year warranty.

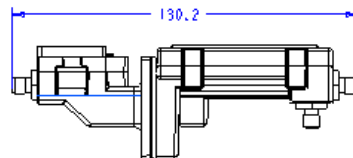
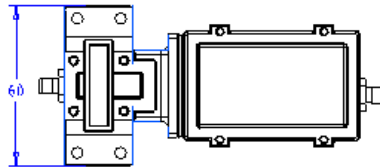
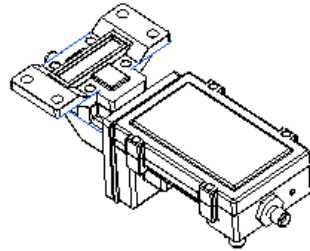
The amplifiers are individually hand tuned to get the very best performance available for each unit. Quality and long term reliability is also essential. Therefore are all LNAs tested according to a very extensive test program, which includes heating, cooling, water-proof testing and rigorous electrical testing.

Swedish Microwave (SMW) was founded 1986 and is today a leading manufacturer of professional LNAs (Low Noise Blockdownconverters). The company is located in Motala Sweden, and to date the products are installed in more than 80 countries.

All work is in-house allowing custom-design products, short delivery times, high flexibility, quick service and support.

# Specification SMW Ku-band Amplifiers

SMW	ILA Ku 28 dB SMA	ILA Ku 22 dB Dual Output SMA
Frequency range	10.7 - 12.75 GHz	10.7 - 12.75 GHz
Gain min.	28 dB	22 dB
Gain variation max.	+/- 3 dB +/- 0.3 dB within 30 MHz	+/- 3 dB +/- 0.3 dB within 30 MHz
Noise figure typical	5.5 dB	5.5 dB
1 dB gain compression point	0 dBm	-8 dBm
3rd order intermodulation	+10 dBm	+2 dBm
Input	SMA-connector	SMA-connector
Output	SMA-connector	SMA-connectors
DC power via separate connector	12-24V / 40 mA typ	12-24V / 40 mA typ
Operating temperature	-30 to +60°C	-30 to +60°C
Dimensions	129 x 40x 40 mm	129 x 40x 40 mm
Material	Diecast aluminium	Diecast aluminium
Finish	Powder coat	Powder coat
Temperature range	-30° to +60°C	-30° to +60°C
Weight	200 g	200 g
<b>Option</b>	Specified frequency ranges with integrated filters	



**SMW**  
SWEDISH MICROWAVE AB

Box 230  
591 23 MOTALA, SWEDEN  
Tel. +46 141 21 61 35  
Fax. +46 141 21 52 24  
e-mail: [info@smw.se](mailto:info@smw.se)  
Website: <http://www.smw.se>